

SSV KIT - Glass Windshield

Part number (SKU) : 715003652,715003653

Product:	Side-by-side
Project no:	487802157_rev2
Instruction Sheet P/N:	487802157
Revision no:	2
Revision date:	November 2020
Item covered:	Glass Windshield

The following symbols may be used in this document:

WARNING

Indicates a hazardous situation which, if not avoided, could result in death or serious injury.

⚠ CAUTION: Indicates a hazard situation which, if not avoided, could result in minor or moderate injury.

NOTICE Indicates an instruction which, if not followed, could severely damage vehicle components or other property.

WARNING

- This kit is designed for specific applicable models only (authorized BRP dealers will confirm model(s)). It is not recommended for units other than the one (those) for which it was sold.
- If the installation of the kit requires a template, ensure template is to scale.
- Should removal of a locking device (e.g. lock tabs, self-locking fasteners, etc.) be required when undergoing disassembly/ assembly, always replace with a new one.
- Torque wrench tightening specifications must strictly be adhered to.
- Always wear EYE PROTECTION AND APPROPRIATE GLOVES when using power tools.

WARNING

Some important safety information and/or operating instructions dedicated to the end user might be included in this instruction sheet. Make sure to give the kit part number as well as the instruction sheet included with this kit to the customer. Verify that the customer has access to all the information required for proper use of the accessory.

WARNING

Always install Rear Wind Protection Kit when this windshield is installed to reduce the risk of carbon monoxide (CO) gas exposure.

NOTE: This kit must be used in conjunction with Windshield Wiper and Washer Kit to maintain clear visibility during severe riding conditions, such as mud riding.

NOTE: USE TIGHTENING TORQUES IN THE FOLLOWING TABLE IF NOT OTHERWISE SPECIFIED.

	GRADE			
	5.8	8.8	10.9	12.9
M4	1.8 ± 0.2 N•m (16 ± 2 lbf•in)	2.8 ± 0.2 N•m (25 ± 2 lbf•in)	3.8 ± 0.2 N•m (34 ± 2 lbf•in)	4.5 ± 0.5 N•m (40 ± 4 lbf•in)
M5	3.3 ± 0.2 N•m (29 ± 2 lbf•in)	5 ± 0.5 N•m (44 ± 4 lbf•in)	7.8 ± 0.7 N•m (69 ± 6 lbf•in)	9 ± 1 N•m (80 ± 9 lbf•in)
M6	7.5 ± 1 N•m (66 ± 9 lbf•in)	10 ± 2 N•m (89 ± 18 lbf•in)	12.8 ± 2.2 N•m (113 ± 19 lbf•in)	16 ± 2 N•m (142 ± 18 lbf•in)
M8	15.3 ± 1.7 N•m (135 ± 15 lbf•in)	24.5 ± 3.5 N•m (18 ± 3 lbf•ft)	31.5 ± 3.5 N•m (23 ± 3 lbf•ft)	40 ± 5 N•m (30 ± 4 lbf•ft)
M10	29 ± 3 N•m (21 ± 2 lbf•ft)	48 ± 6 N•m (35 ± 4 lbf•ft)	61 ± 9 N•m (45 ± 7 lbf•ft)	73 ± 7 N•m (54 ± 5 lbf•ft)
M12	52 ± 6 N•m (38 ± 4 lbf•ft)	85 ± 10 N•m (63 ± 7 lbf•ft)	105 ± 15 N•m (77 ± 11 lbf•ft)	128 ± 17 N•m (94 ± 13 lbf•ft)
M14	85 ± 10 N•m (63 ± 7 lbf•ft)	135 ± 15 N•m (100 ± 11 lbf•ft)	170 ± 20 N•m (125 ± 15 lbf•ft)	200 ± 25 N•m (148 ± 18 lbf•ft)
M16	126 ± 14 N•m (93 ± 10 lbf•ft)	205 ± 25 N•m (151 ± 18 lbf•ft)	255 ± 30 N•m (188 ± 22 lbf•ft)	305 ± 35 N•m (225 ± 26 lbf•ft)
M18	170 ± 20 N•m (125 ± 15 lbf•ft)	273 ± 32 N•m (201 ± 24 lbf•ft)	330 ± 25 N•m (243 ± 18 lbf•ft)	413 ± 47 N•m (305 ± 35 lbf•ft)

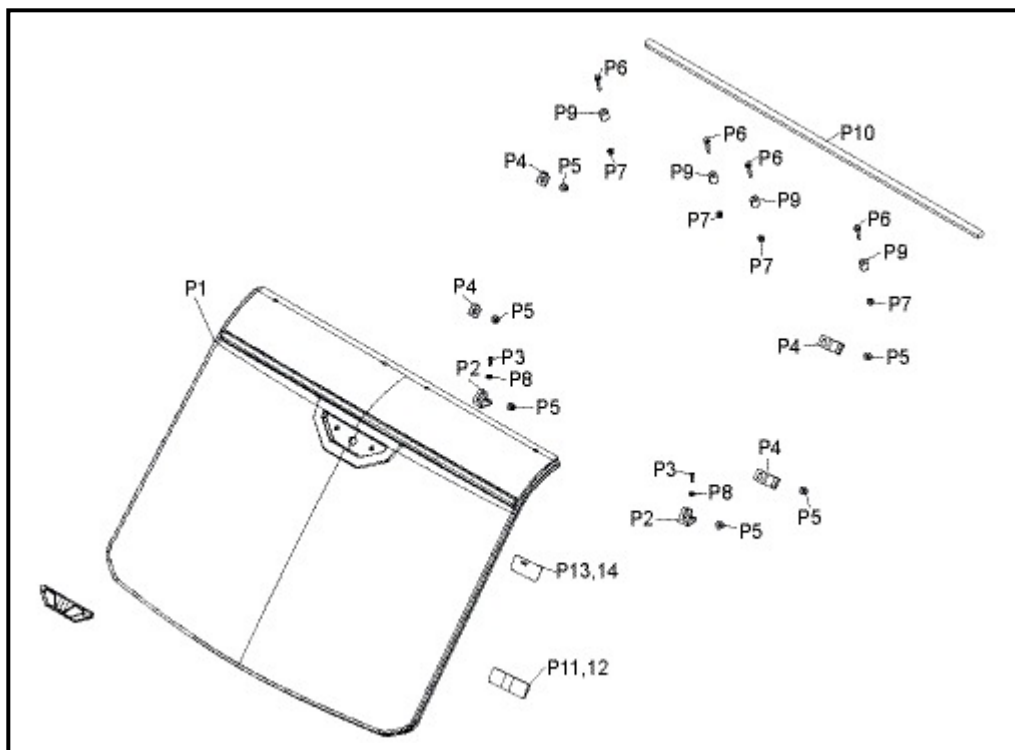
The illustrations in this document show typical construction of the different assemblies and may not reproduce the full detail or exact shape of the parts; however, they represent parts that have the same or similar function.

Installation time is approximately 0.5 hour.

REQUIRED TOOLS

Required Tool		Use
T1	Drill bit 2.5 mm (3/32 in)	To drill guiding holes for K50 screw

PARTS TO BE INSTALLED



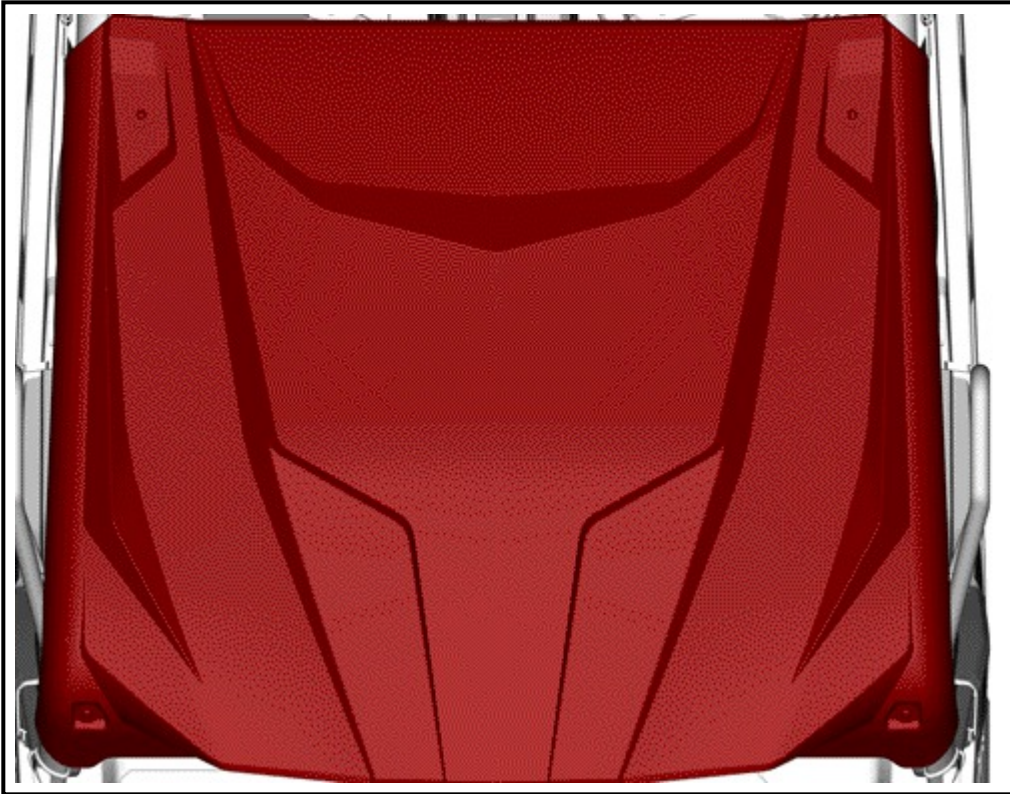
ITEM	DESCRIPTION	Part number	QTY
P1	Glass Windshield	Not available separately	1
---	Service Kit	715004772 (all parts below are included in this kit)	1
P2	Windshield Support	Not available separately	2
P3	K50 x 20 Torx Screw	250000760	2
P4	Lateral Windshield Support	Not available separately	4
P5	M8 Elastic Flanged Nut	233281466	6
P6	M6 x 35 Screw	207663554	4
P7	M6 Elastic Flanged Nut	233261466	4
P8	Washer	250000039	2
P9	Spacer	Not available separately	4
P10	Seal	Not available separately	1
P11	Warning Label Transport Vehicle (EN)	704905936	1
P12	Warning Label Transport Vehicle (FR)	704905937	1
P13	Warning Decal Windshield (EN)	704907147	1
P14	Warning Decal Windshield (FR)	704907148	1

INSTRUCTIONS

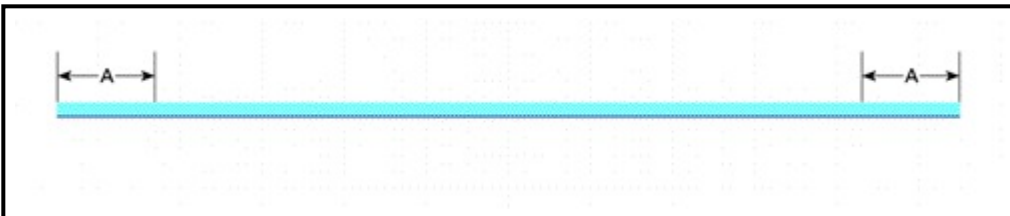
Vehicle Preparation

NOTE: This kit is designed to be installed in conjunction with Wiper AND THE OVERHEAD SWITCH PANEL

Unscrew the front of the roof to have the necessary space to install the windshield (see roof instruction sheet for instructions).



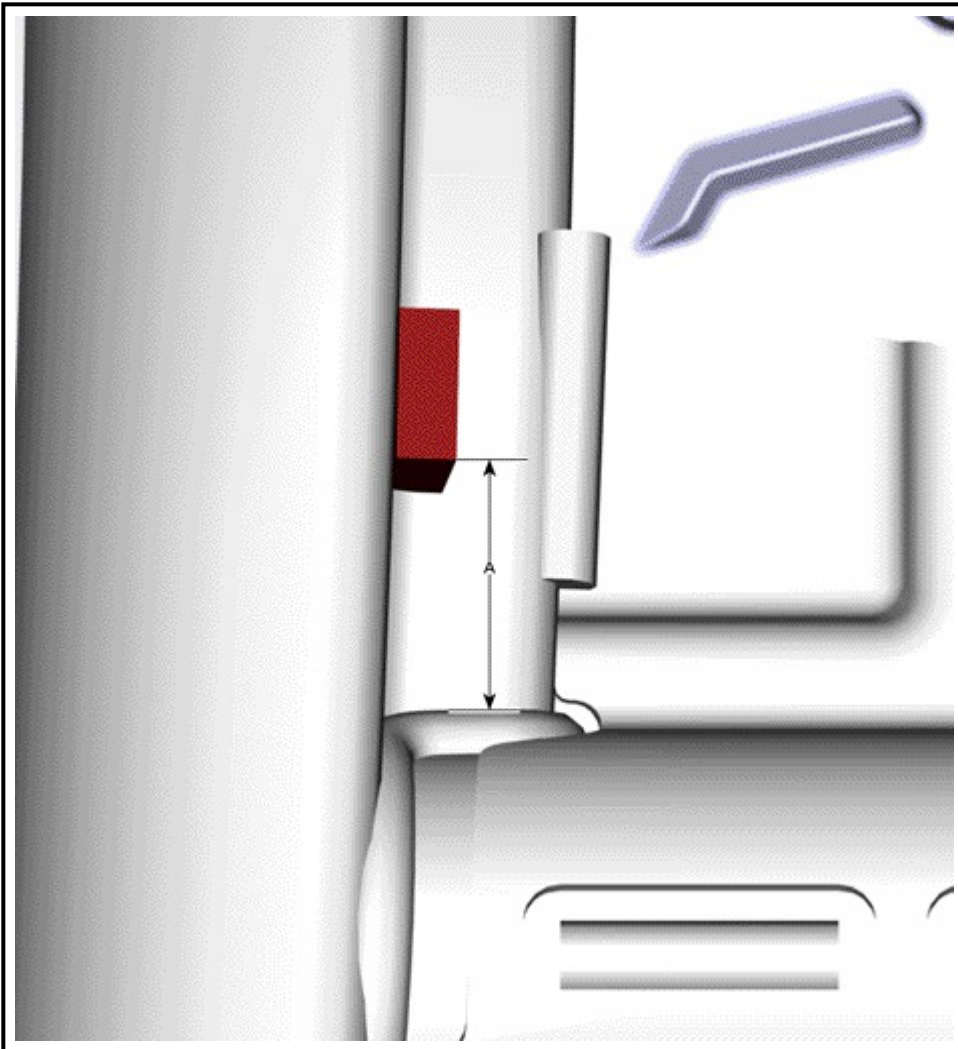
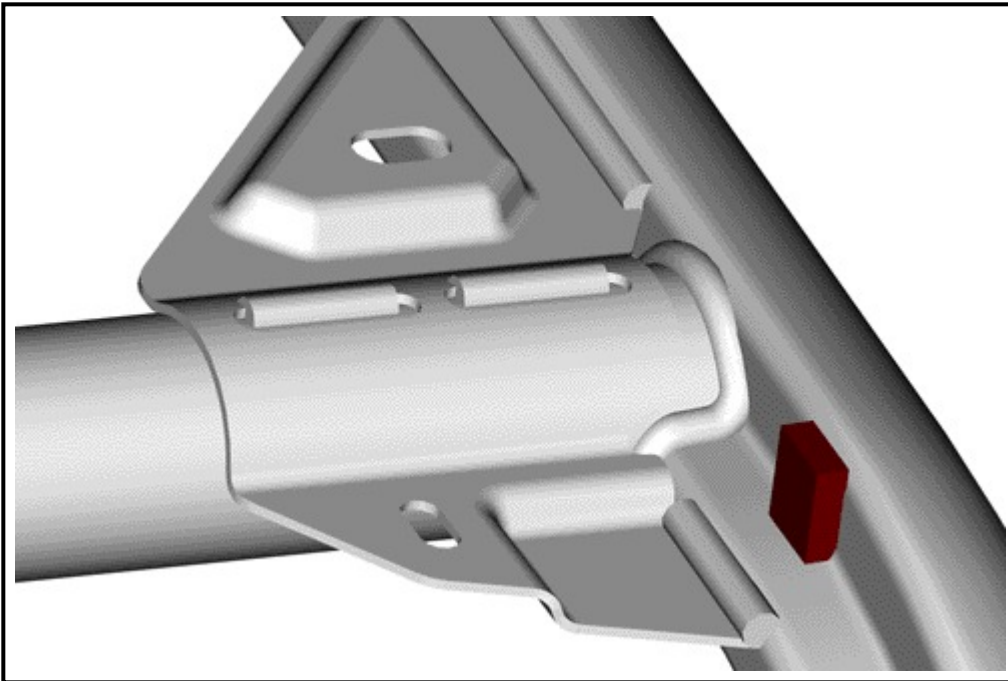
Cut two pieces of 20 mm (13/16 in) of the seal [P10].



$A = 20 \text{ MM (13/16 IN)}$

NOTE: Clean cage with isopropyl alcohol. Surface must be clean and free of any contaminants.

Glue the two 20 mm (13/16 in) pieces of seal on the inside of the frame at 28 mm (1-1/8 in) of the round tube. One on driver side and one on passenger side.



A = 28 mm (1-1/8 in)

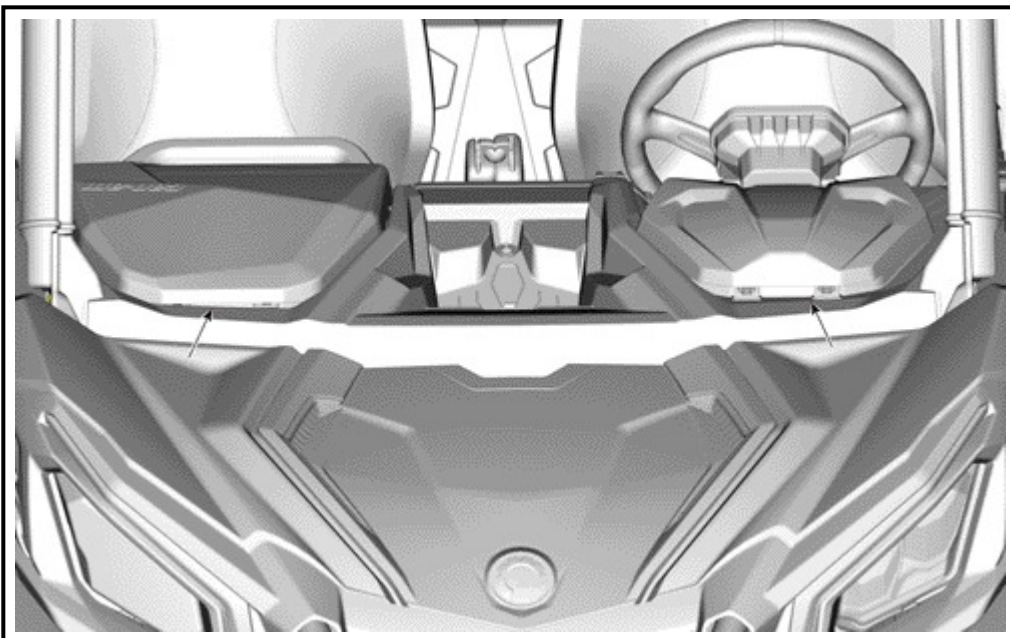
Windshield Preparation

Install Windshield wiper motor and windshield wiper arm (see wiper and washer kit instruction sheet for instructions).



Installation

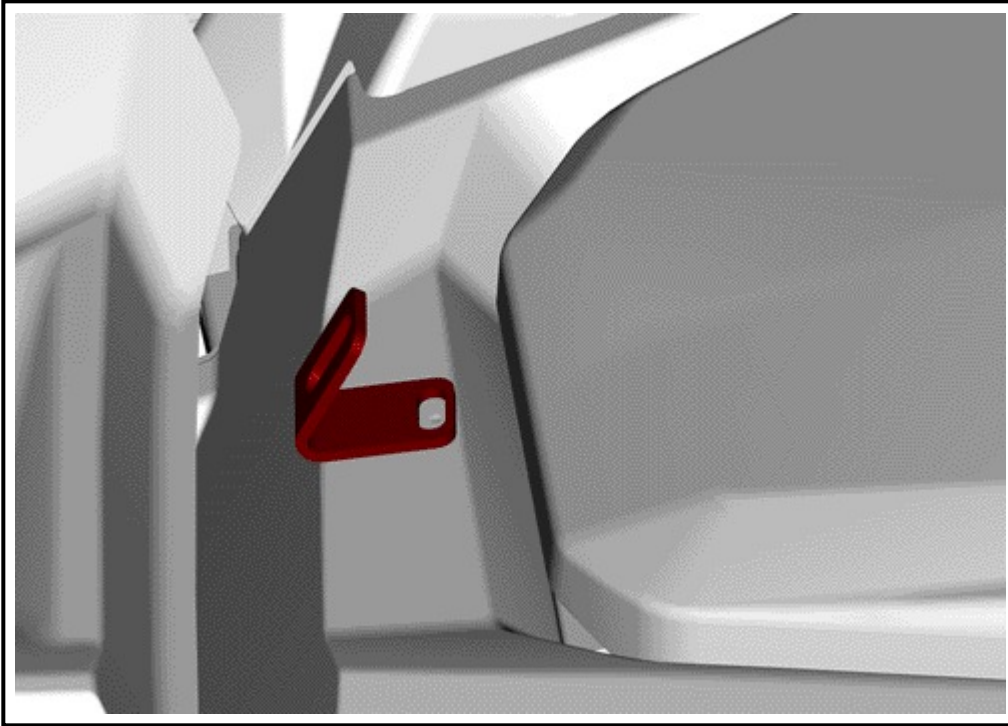
Locate molded dimples and drill [T1]3 mm (1/8 in) holes in the two spots on the dash as shown below.



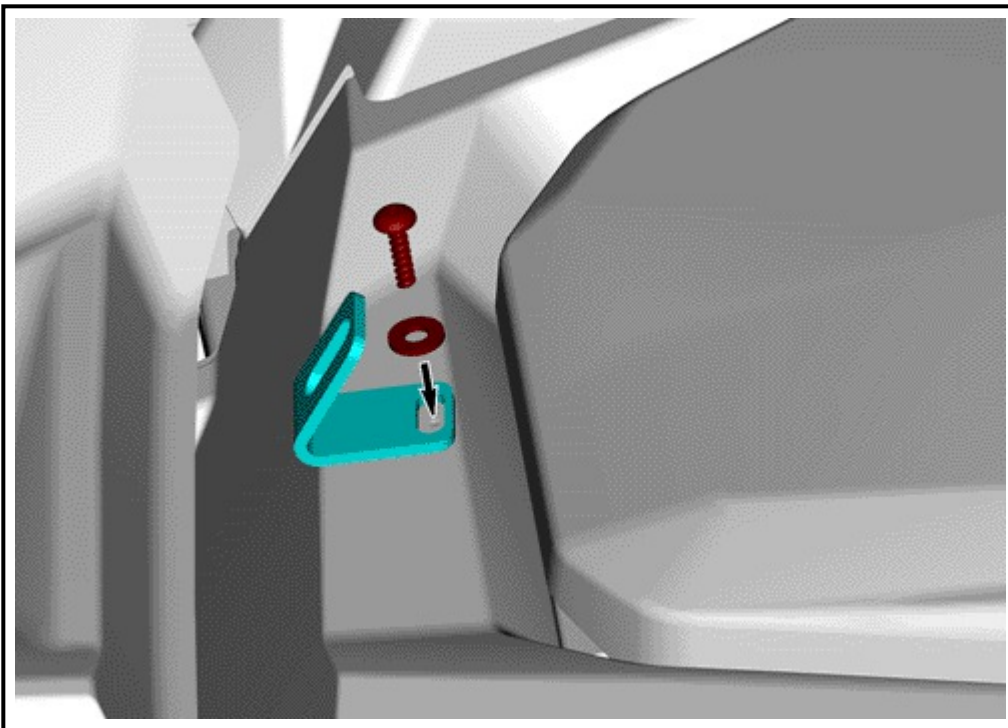
NOTICE Make sure not to damage any components under the dash while drilling.

NOTICE Do not drill more than 3 mm (1/8 in) deep.

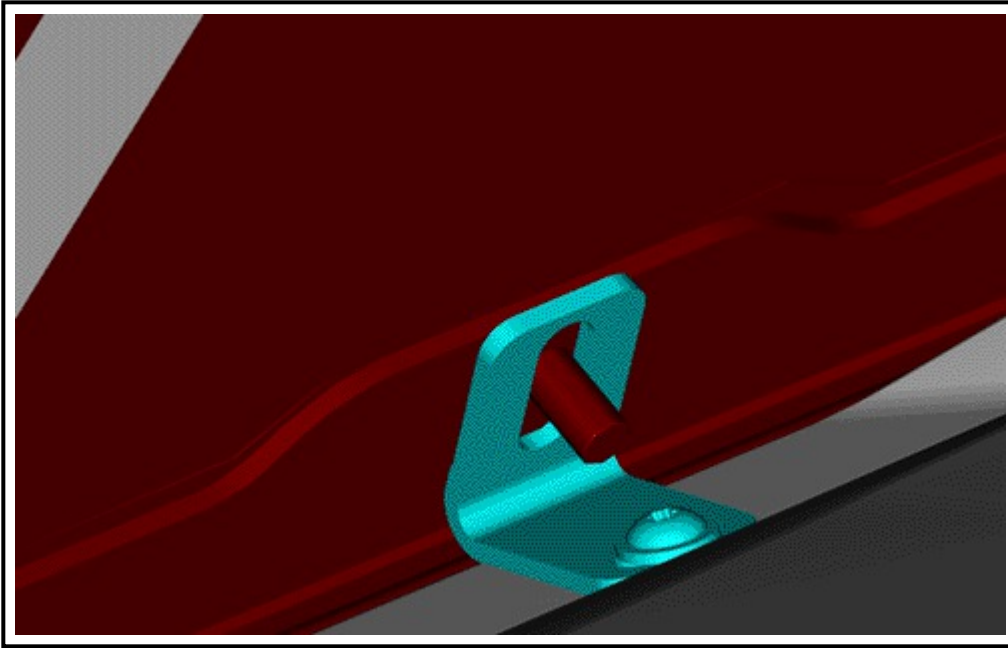
Install the windshield support [P2] on the dash in the previously drilled holes.



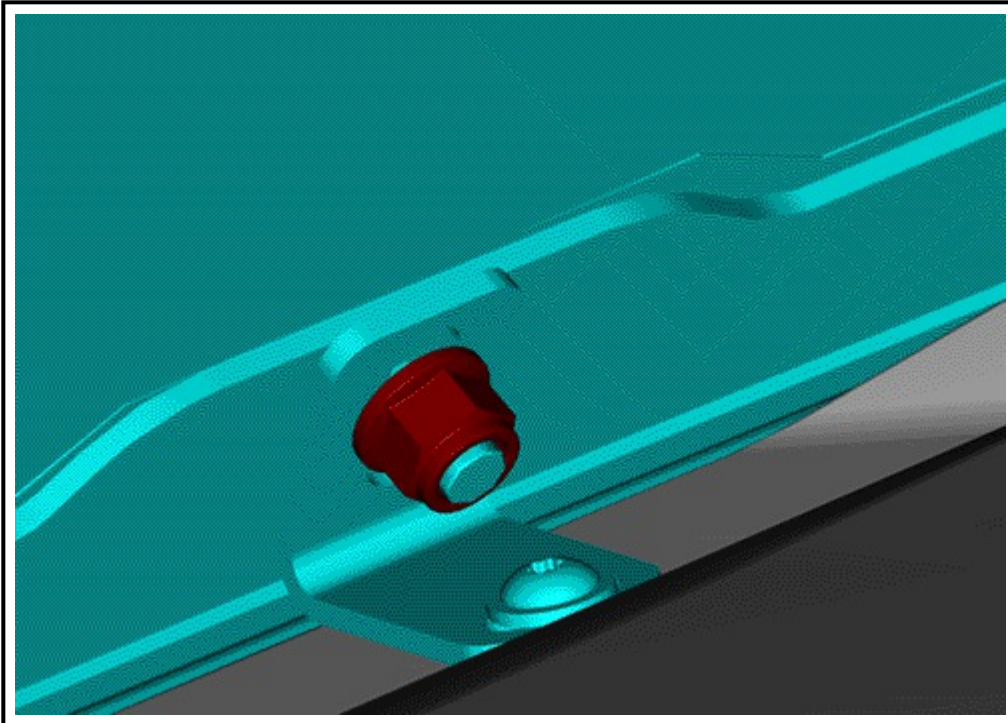
Secure in place using the washer [P8] and the M6 x 35 screw [P6]. Do not torque yet.



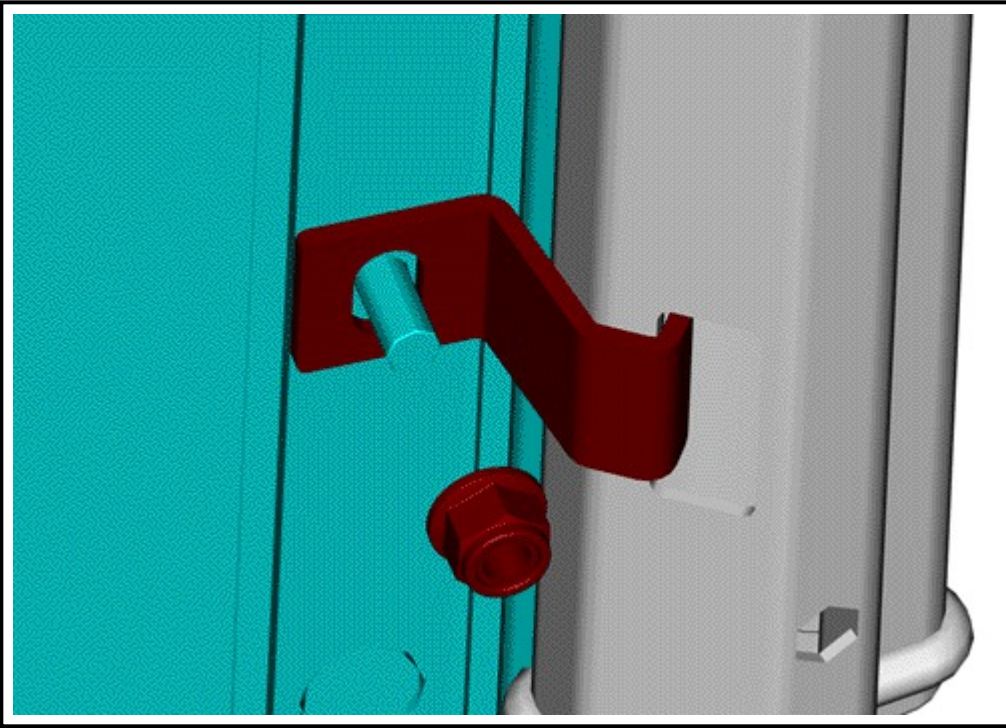
Install the windshield on the frame and align the stud with the windshield support.



Install the M8 elastic flanged nut [P5] on the stud. Do not torque yet.



Install the side of the windshield with the lateral windshield support [P4] and the M8 elastic flanged nut [P5]. Do not torque yet.

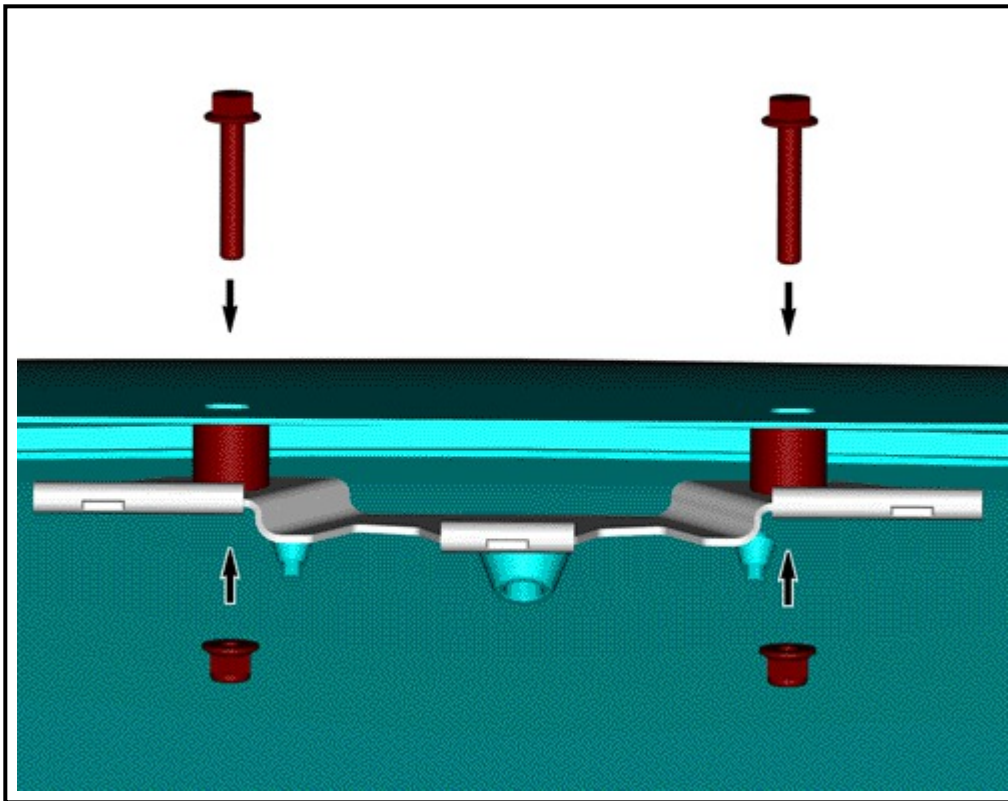


Center the windshield with the frame and torque starting with the nuts at the bottom and then the ones on the side.

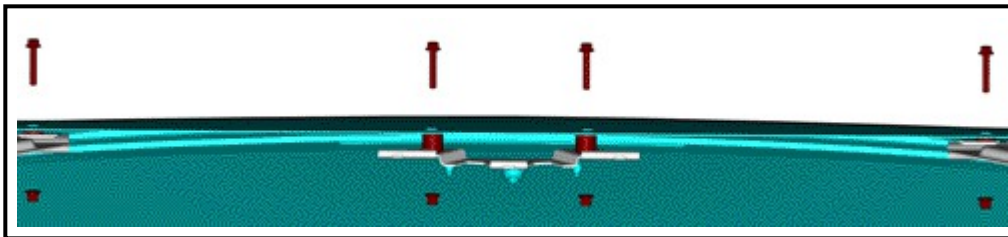
NOTICE Do not use any pneumatic or electrical tools to tighten the four (4) nuts. This could damage the product and/or reduce its performance.

tightening torque	
M8 Elastic flanged nut [P5]	10 ± 2 N•m (89 ± 18 lbf•in)

Install the top of the windshield on the frame with the M6 x 35 screws [P6], spacers [P9] and the M6 elastic flanged nut [P7]. Do not torque yet.



TYPICAL

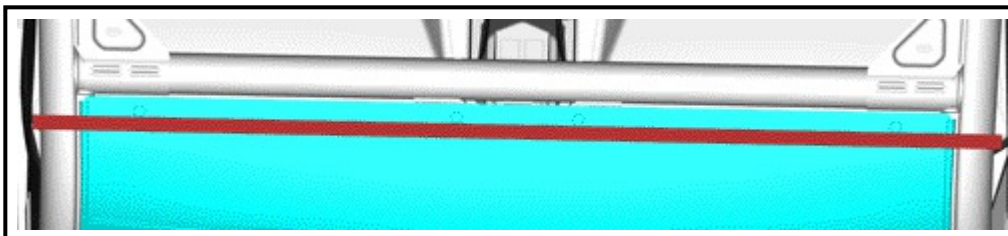


TYPICAL

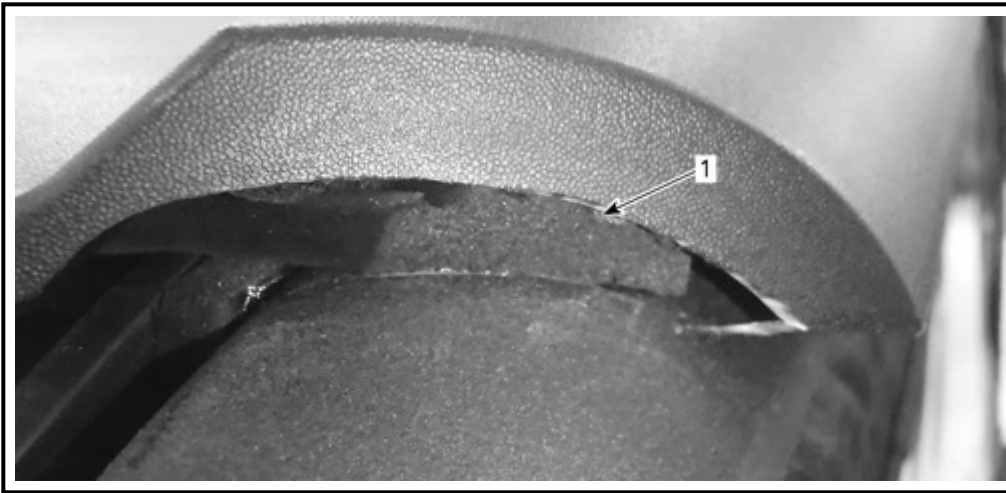
Center the windshield on the frame and torque.

tightening torque	
M6 Elastic Flanged Nut [P6]	10 ± 2 N•m (89 ± 18 lbf•in)

Install the seal [P10] in front of the M6 x 35 screw head [P6] on the windshield.



Reinstall the front of the roof. Trim the excess seal along the front corner edge of the roof.



1. Trim seal

NOTE: Make sure that the roof covers completely the seal.

Finalize the windshield wiper installation (see wiper and washer kit instruction sheet 487802158 for instructions).

Secure the roof in place (see roof instruction sheet for instructions).

SAFETY LABEL

This product comes with the following label containing important safety information.

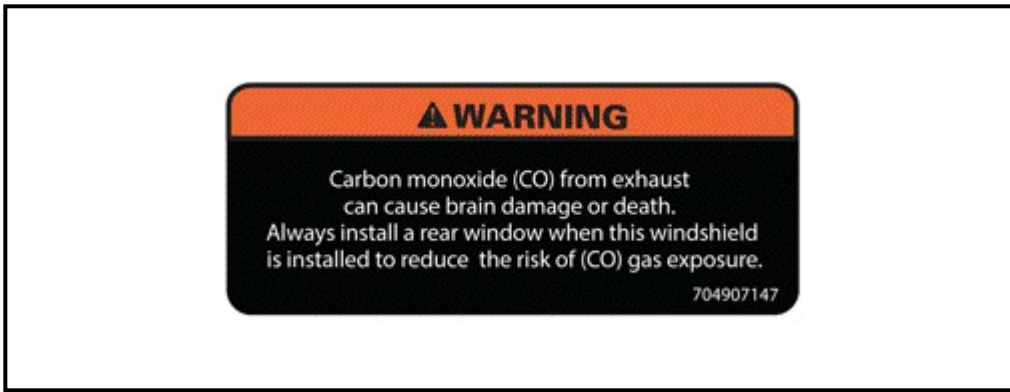
The label should be considered a permanent part of this product. If the label come off or become hard to read, please contact an authorized dealer for FREE OF CHARGE replacement.

Any person who intend to use this product should read and understand the information contained on the label before doing so.

Clean surface using isopropyl alcohol and dry thoroughly before installing the label.

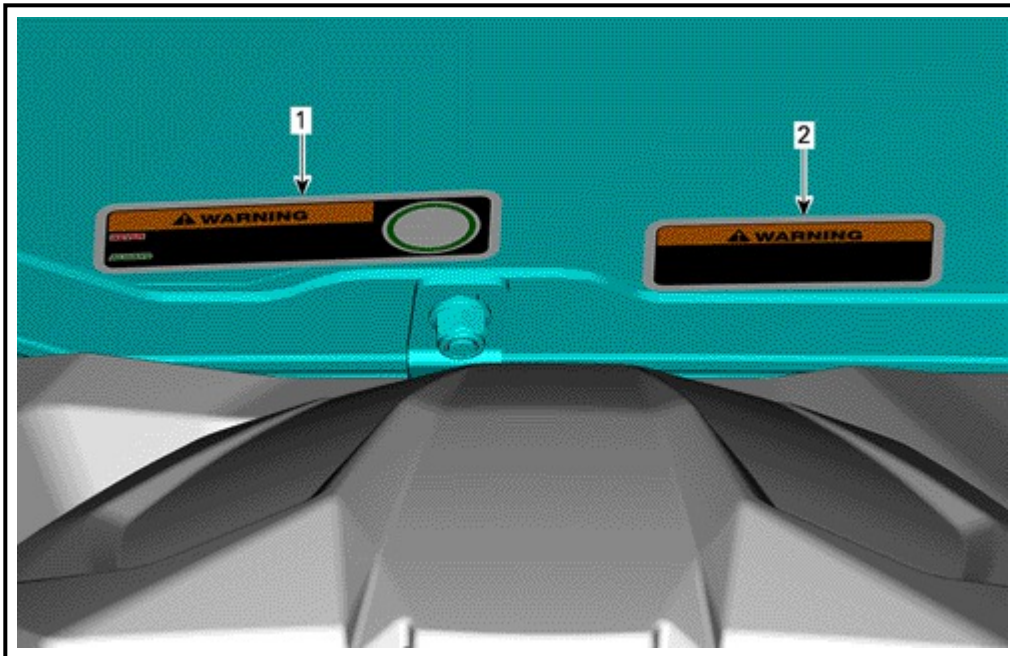


Warning Label Transport Vehicle



Warning Decal Windshield

French warning labels are available in the kit and must be installed in accordance with client's preferences.



- 1. Warning Label Transport Vehicle
- 2. Warning Decal Windshield